

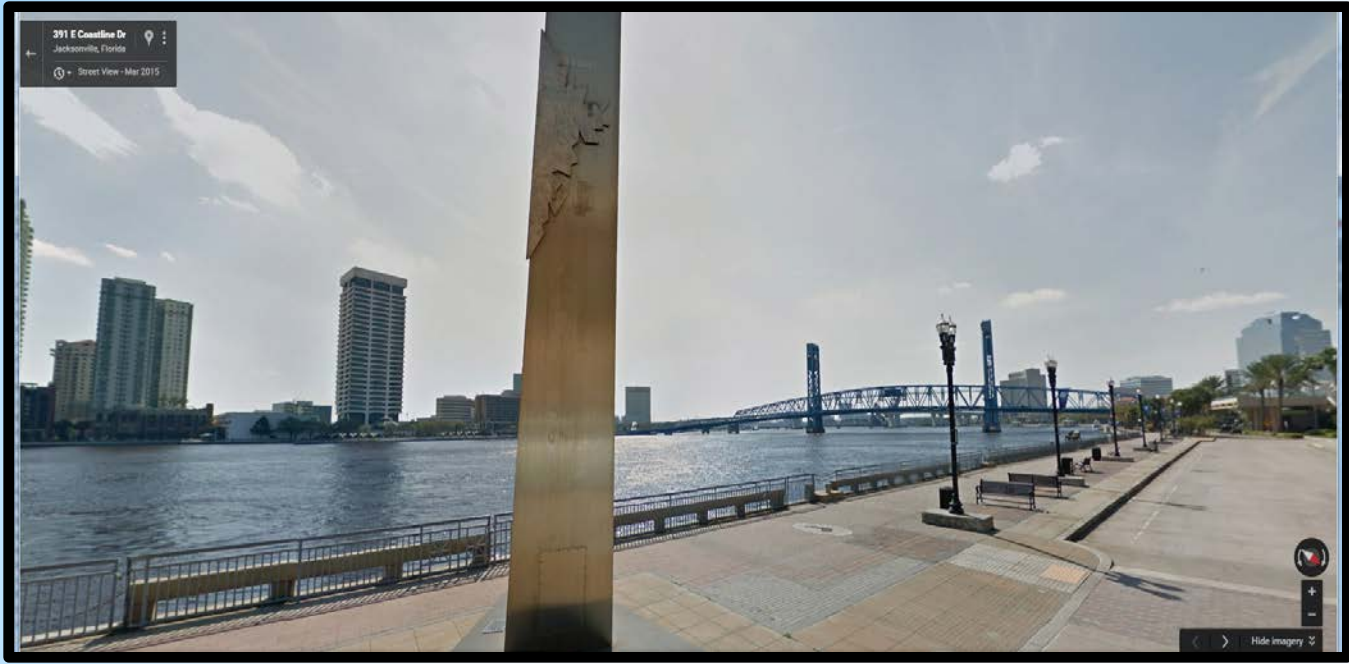
Activating and Packaging Jacksonville's Water Experiences

- The Downtown Experience
- The Beach Experience
- The Nature Experience
- The Marine Life Experience
- The Sports and Fitness Experience

The Downtown Experience- Landscaped Riverwalks and Nodes



**AIA VISION FOR A NEW
JACKSONVILLE**

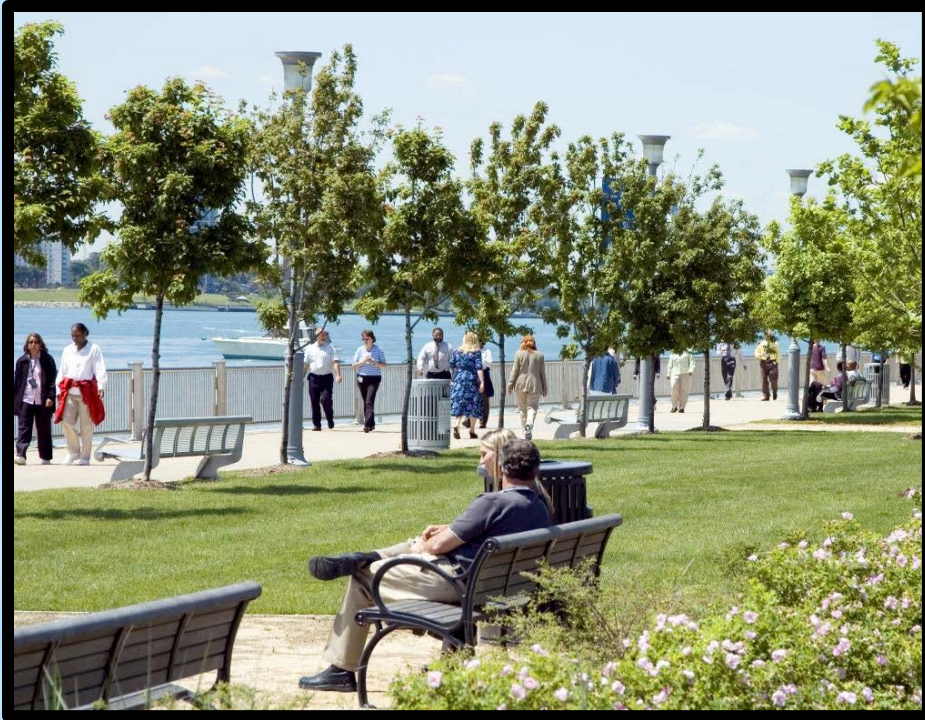


Today our
Riverwalk is
functional
but cold and
sterile

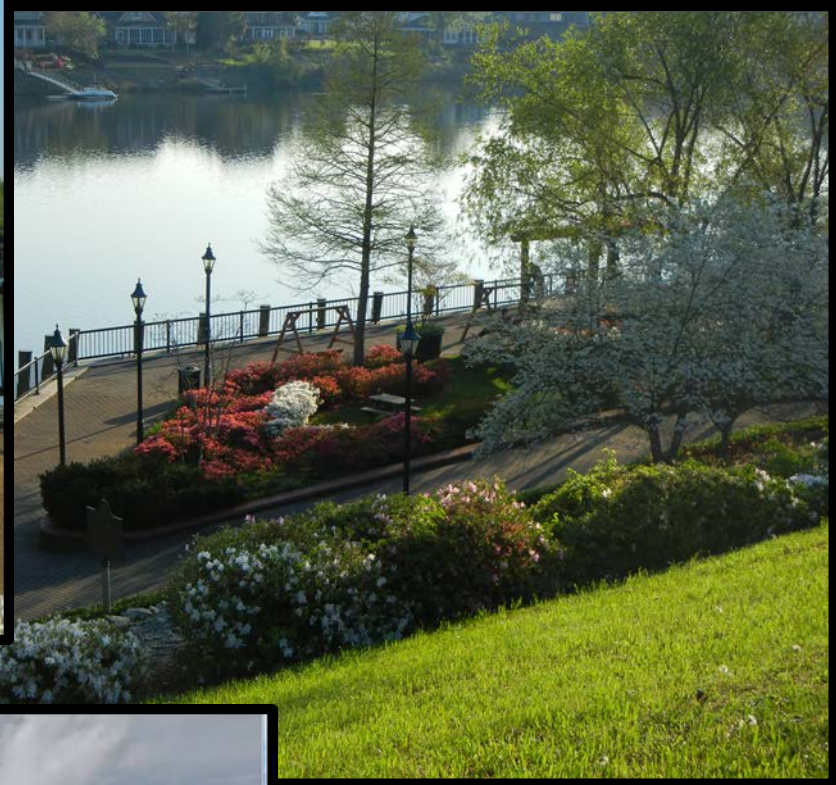


The Detroit Riverwalk

Can you tell what is different?



Augusta Riverwalk



Jacksonville

Jacksonville

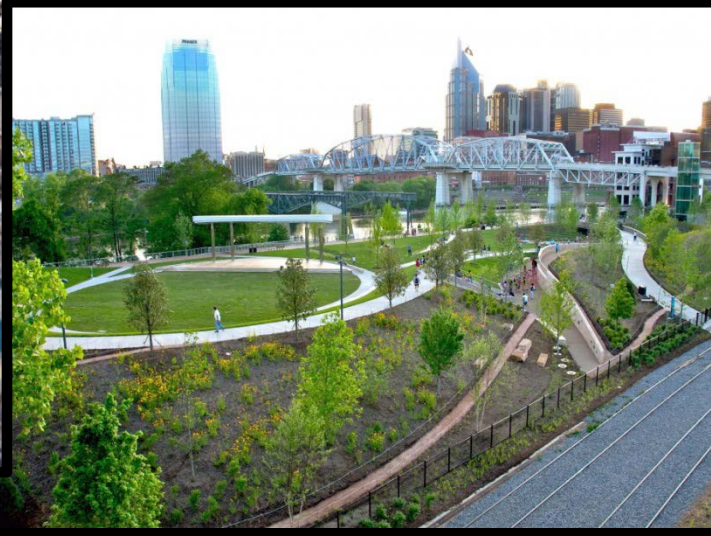
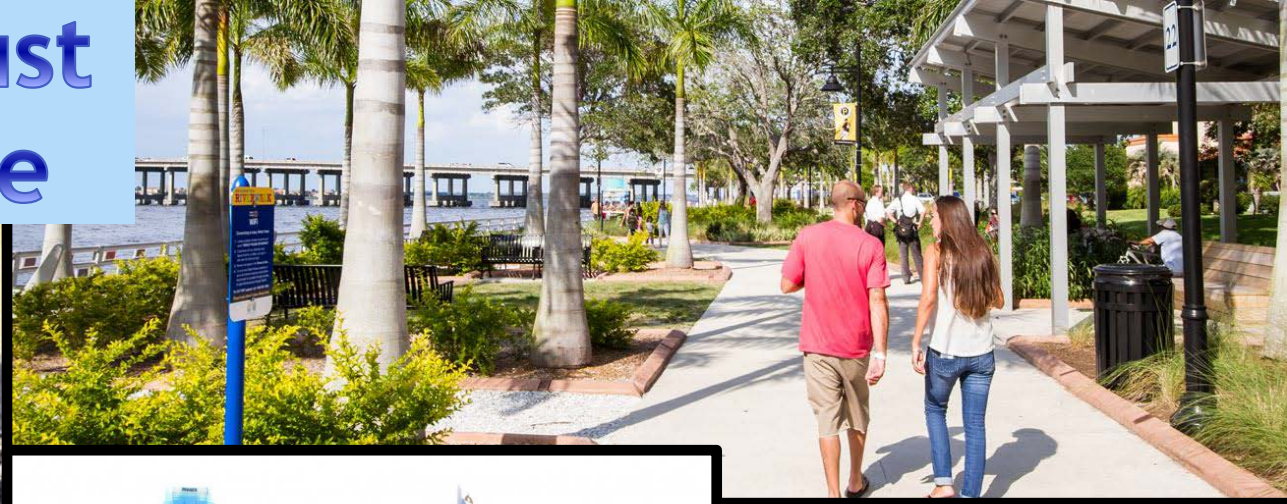


Ontario
Riverwalk →

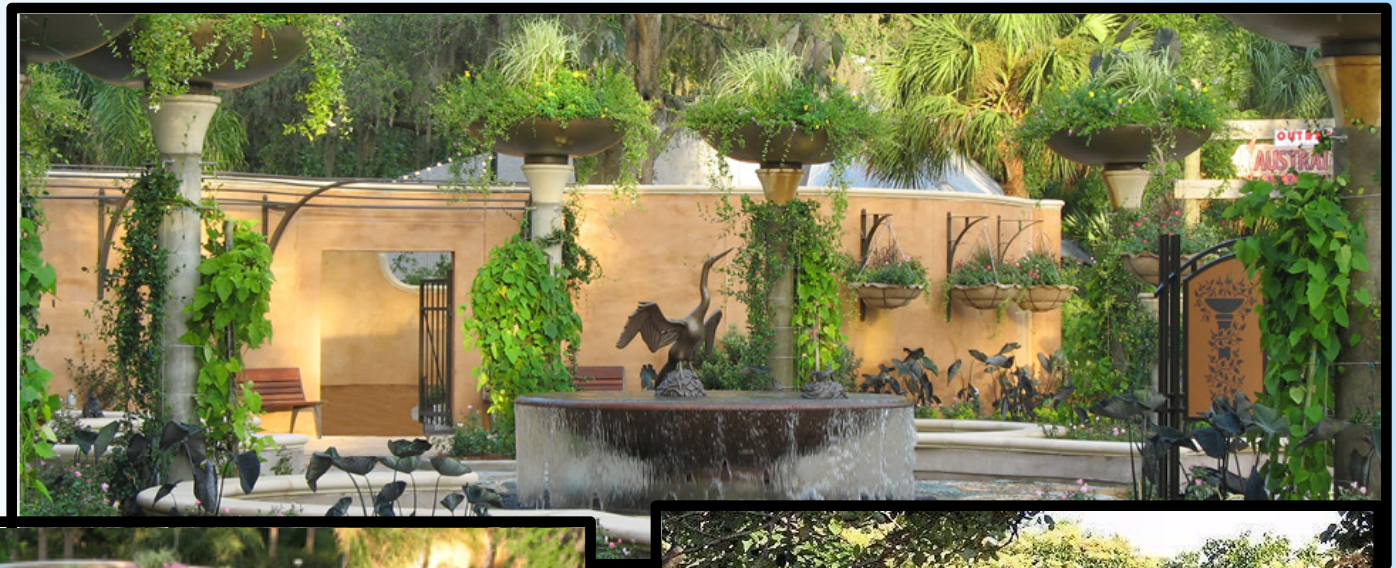


San Antonio →

Riverwalks must have landscape



Our zoo
is a great
model



So let's start there

Then Add the Nodes....

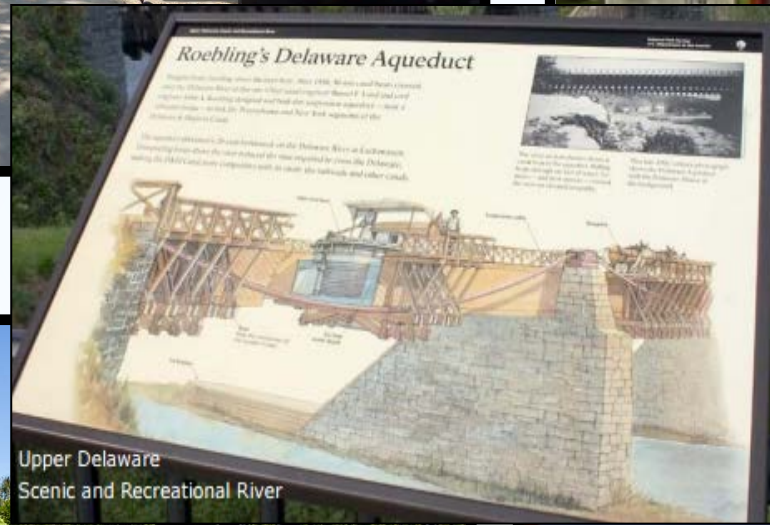
What Is a Node?

A node is a place-making feature located at a mobility crossroads

Each node

- identifies where you are in relation to its context and neighborhood
- is a junction between cross water transportation, linear riverfront park, and corridors leading inland
- includes an iconic feature that helps to create waterfront drama
- tells part of Jacksonville's story
- Includes space for an interactive visitor information kiosk

Story-telling exhibits add interest

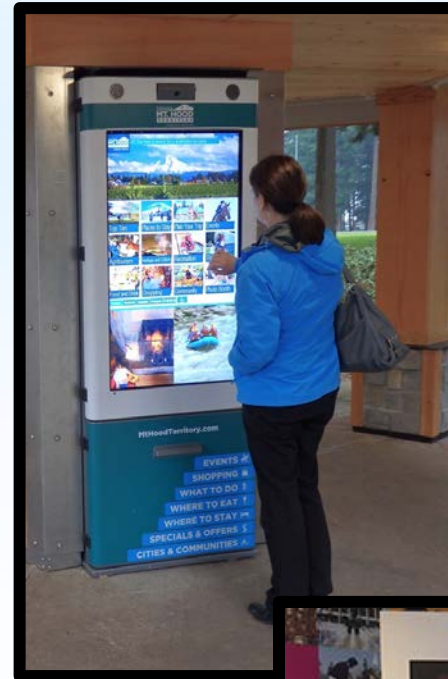


Upper Delaware
Scenic and Recreational River





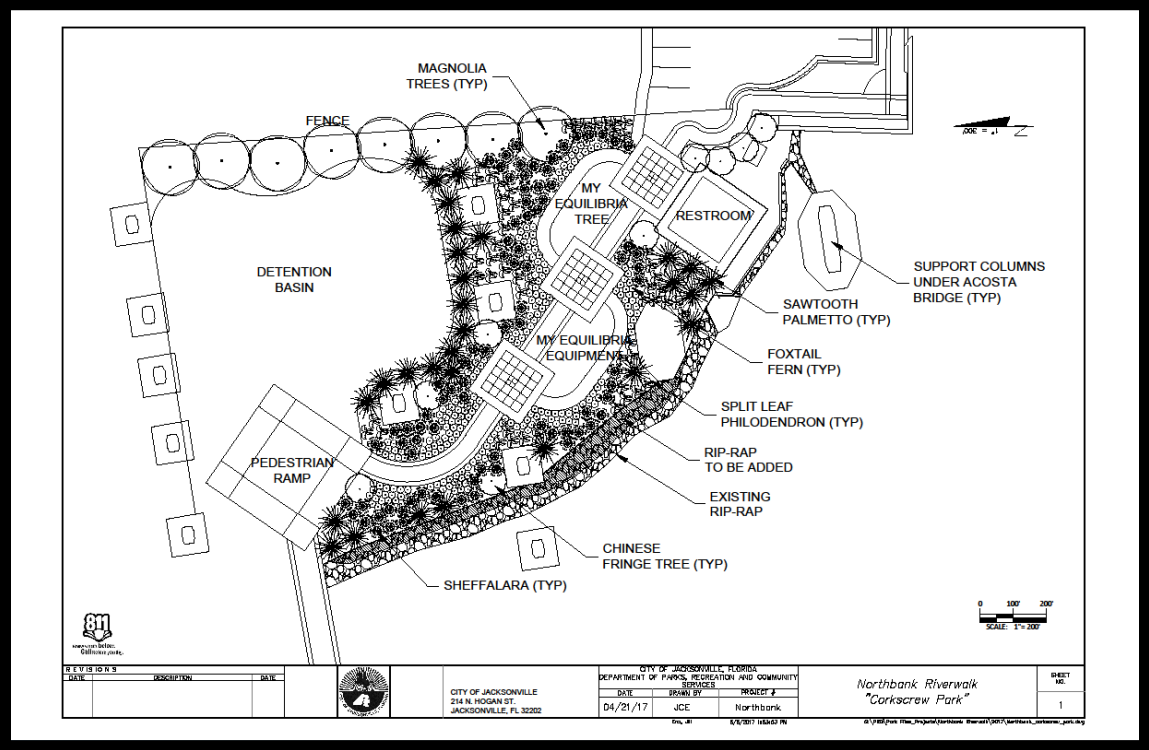
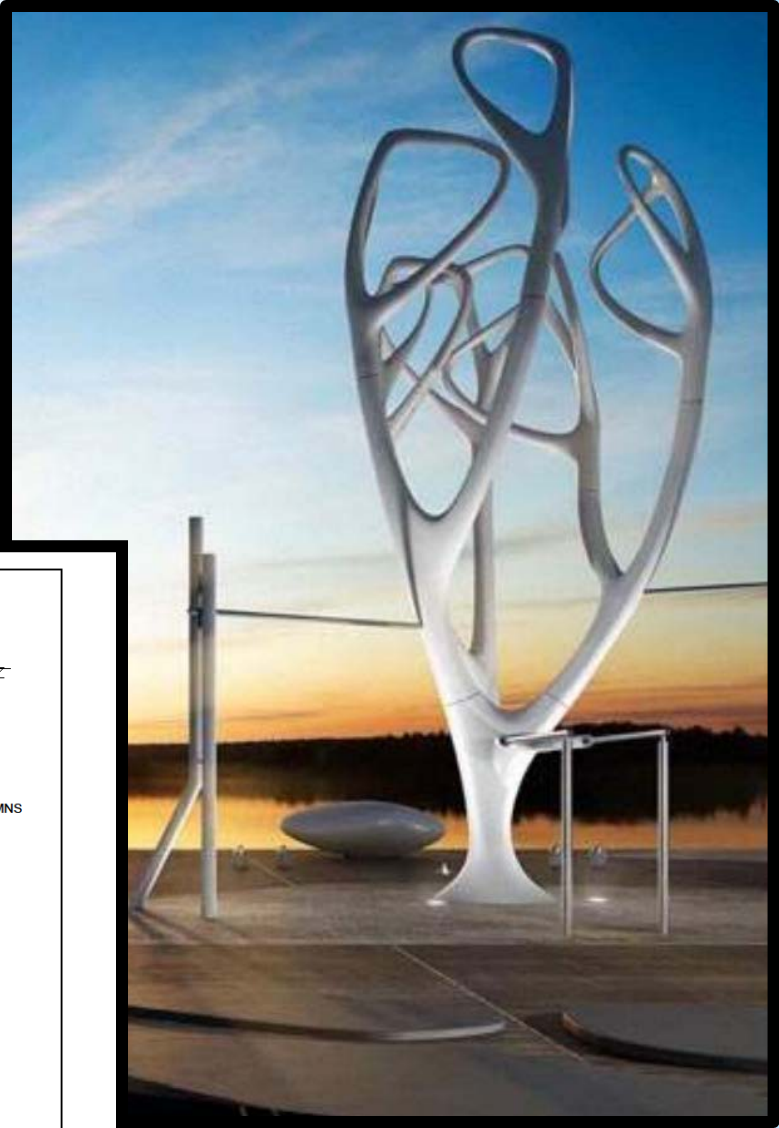
Iconic
Features-
sculptures,
fountains,
structures,
lights



Interactive
visitor
information
kiosks



Corkscrew Park is Phase 1



DATE	DESCRIPTION	DATE	CITY OF JACKSONVILLE, FLORIDA DEPARTMENT OF PARKS, RECREATION AND COMMUNITY SERVICES	PROJECT #	SHEET NO.
			CITY OF JACKSONVILLE 214 N. HOGAN ST. JACKSONVILLE, FL 32202	Northbank "Corkscrew Park"	1
			DATE: 04/21/17 BY: JCE	PROJECT #	

The Beach Experience

The Beach Communities

Hanna Park

Hugenot Park

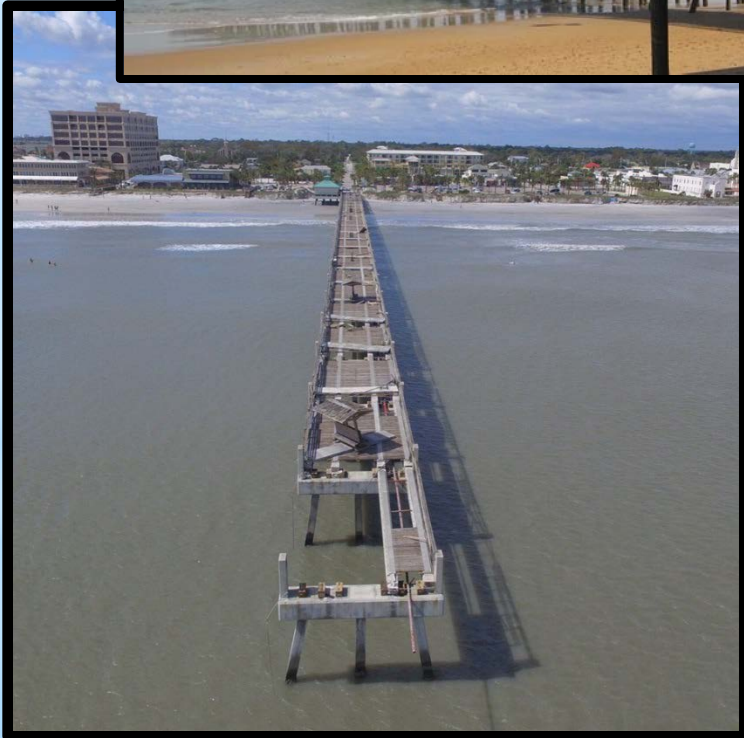
Talbot Islands



The Beach Communities

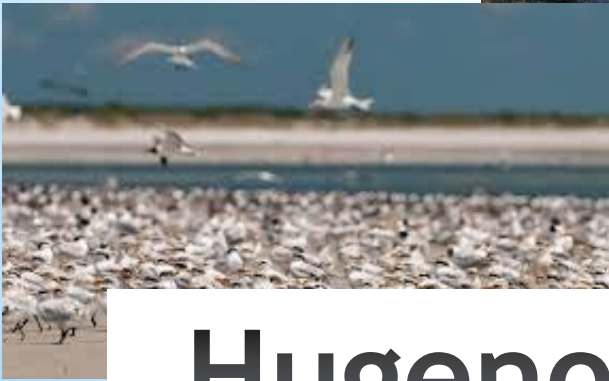
Fun, Sun, Restaurants, Festivals

Jacksonville Beach Pier



Hanna Park

Talbot Islands



Hugenot Park

The Nature Experience

Kayaking and canoeing

Fishing

Bird-watching

Hiking

Archaeology and History

Camping

TIMUCUAN TRAIL PARKS



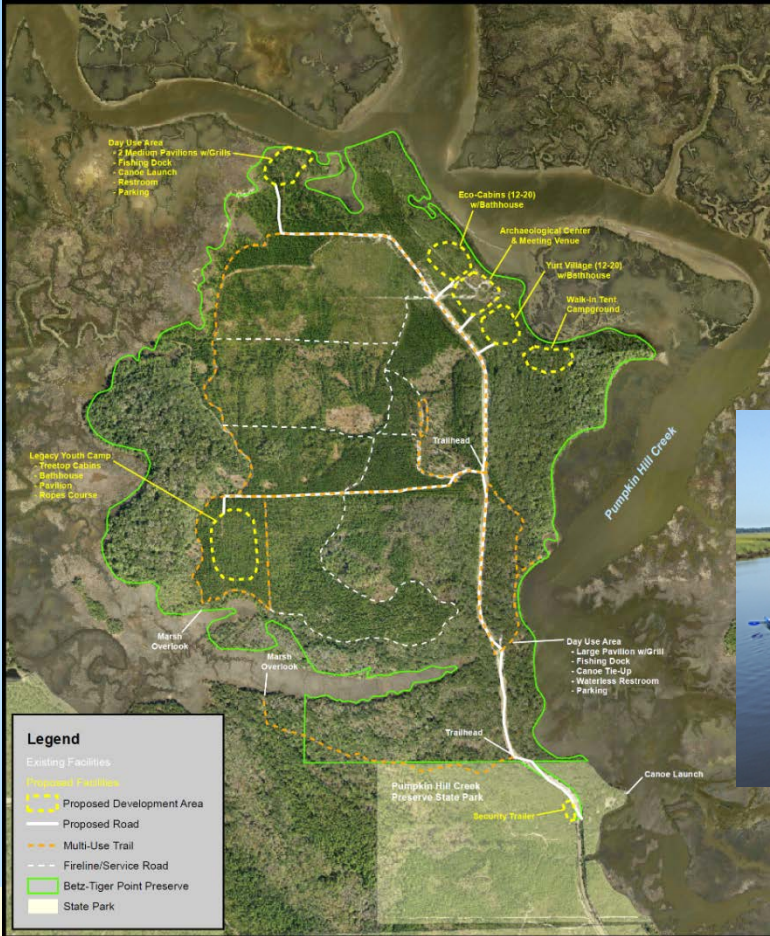
Map of Timucuan Trail Parks

Timucuan Trail Parks and Preserves are managed by the Florida Department of Transportation (FDOT) and the Florida Department of Environmental Protection (FDEP).

The map is a collaborative effort by the Florida Department of Transportation (FDOT) and the Florida Department of Environmental Protection (FDEP).

© 2010 Florida Department of Transportation and Florida Department of Environmental Protection

Betz-Tiger Point Preserve



Legend

Existing Facilities

Proposed Facilities

Proposed Development Area

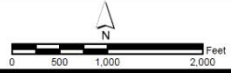
Proposed Road

Multi-Use Trail

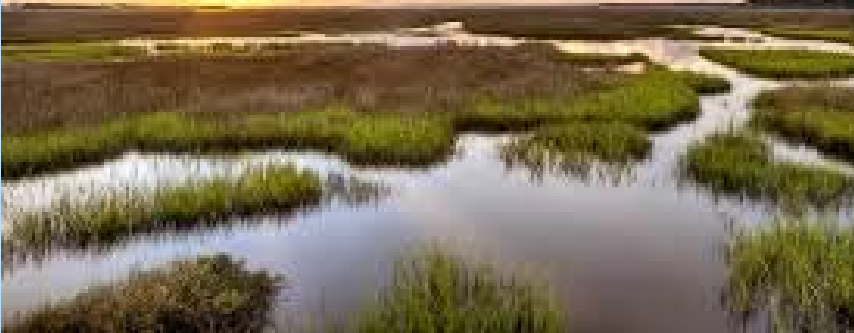
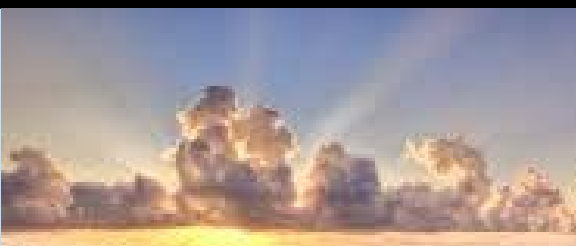
Fireline/Service Road

Betz-Tiger Point Preserve

State Park



Betz-Tiger Point Preserve **Master Site Plan**



Pumpkin Hill Preserve

The Marine Life Experience

OCEARCH research

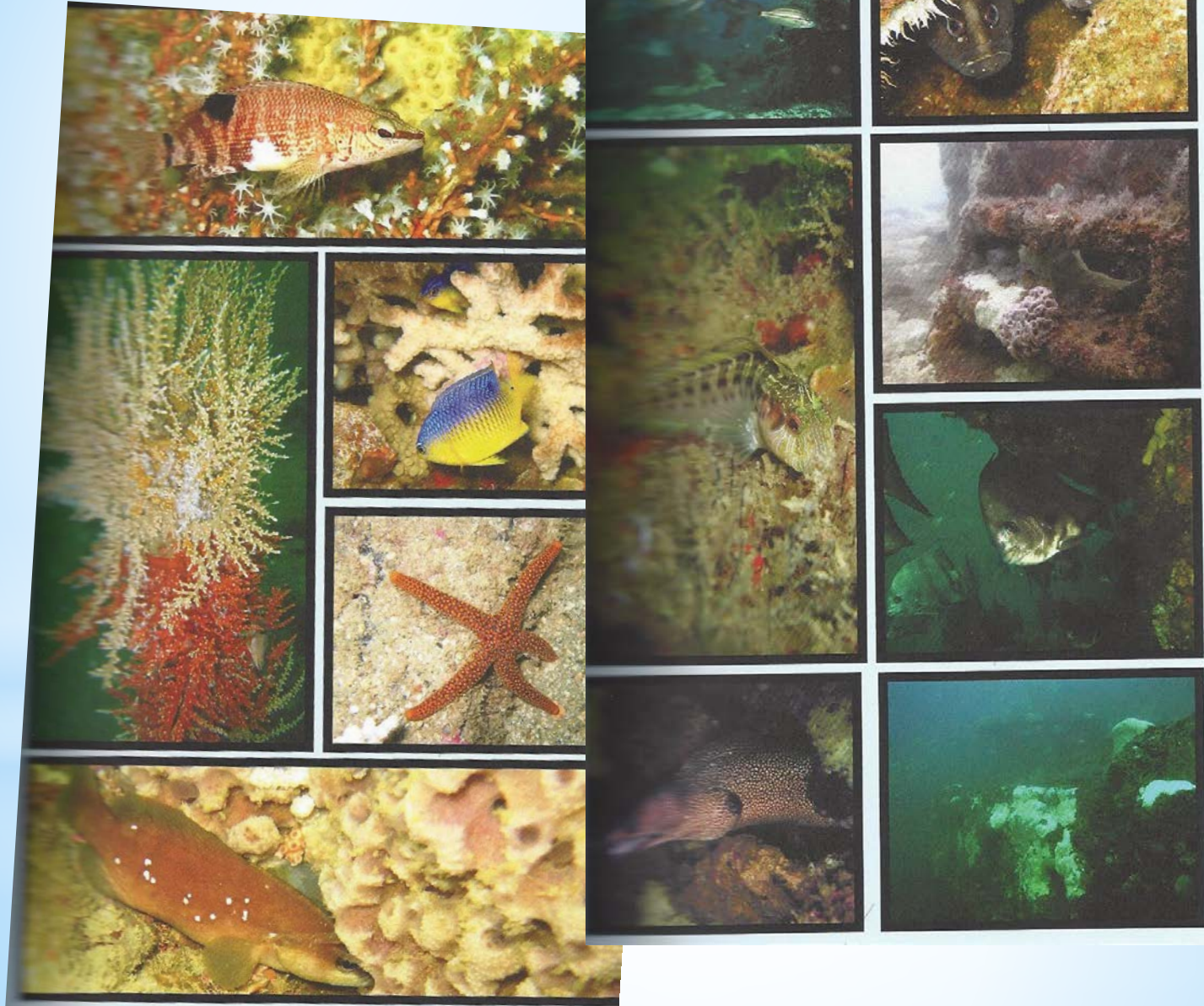
Fishing in shore and off shore

Diving our natural and artificial reefs

Working waterfront at Mayport- Commercial
Shrimpers and Charter Captains

Manatee conservation/zoo

Diving off our shore



* <https://www.youtube.com/watch?v=scYRBGJ91mc>



**Fishing is
HOT**

Mayport Village 2017





Mayport Village 2007

Sports and Fitness Experience

Rowing Center on Arlington River

Water Sports- surfing; paddleboard;etc.

Kayak/Canoe trails Nassau River to ocean

Over 30 miles of hiking trails

Connected Bike/ped multiuse Timucuan

Trail - Core 2 Coast - S-line Baldwin

Rail Trail- Cecil;Connected downtown

Riverwalk/bridges loop

Life safety swim lessons for all children